



2023 RATES

◆ **THE COTTAGE** ◆



Published on 1 June 2022 - Please note that these rates may be subject to change without prior notice.

◆ **SELF-CATERING ACCOMMODATION for up to 5 people** ◆

“The more who stay, the less each pays!”

BASE RATE

1 PERSON	1 en-suite room (1 double bed)		R550,00 Per Night.
2 PEOPLE	1 en-suite room (1 double bed)	<i>(R300 pp x 2, per night.)</i>	R600,00 Per Night
	2 en-suite rooms (1 double bed, 2 single beds)	<i>(R325 pp x 2, per night.)</i>	R650,00 Per Night
3 PEOPLE	2 en-suite rooms (1 double bed, 2 single beds)	<i>(R250 pp x 3, per night.)</i>	R750,00 Per Night
4 PEOPLE	2 en-suite rooms (1 double bed, 2 single beds)	<i>(R200 pp x 4, per night.)</i>	R800,00 Per Night
5 PEOPLE	2 en-suite rooms (1 double bed, 3 single beds)	<i>(R170 pp x 5, per night.)</i>	R850,00 Per Night

BASE RATE INCLUDES:

- 1 vehicle & 1 trailer parking FREE
- 1 pet stays FREE

BASE RATE DOES NOT INCLUDE:

- Housekeeping
- Any extras

2 or 3 Pets

Nightly fee covers all 3pets. Maximum 3 pets permitted.

R30,00 Per Night

◆ **OPTIONAL EXTRAS** ◆

HOUSEKEEPING:

Cleaning Service

By appointment only.
Not on weekends or public holidays.

Tidy kitchen, make beds, clean bathrooms, provide fresh towels, clean bins, sanitise high-touch surfaces.

R150,00 Per Clean

CHILDREN'S ACTIVITIES:

gogo's ADD-ventures

By appointment only.

“They always start with a story - and end with some fun!”

Barbara presents on-site, age-appropriate children's activities, e.g. Penguin Pals Holiday Club / Coral Tree Reading Challenge / Baking Buddies, etc. For all the details, contact Barbara at coraltreepe@lantic.net.

R100,00 Per child, per hour.

◆ **SPECIALS** ◆



GRANDPARENTS' SPECIAL

With a family of 5 staying in the Cottage at this nightly rate...

2 Grandparents stay in the Coral Tree Suite at half price!

R999,00 Per Night

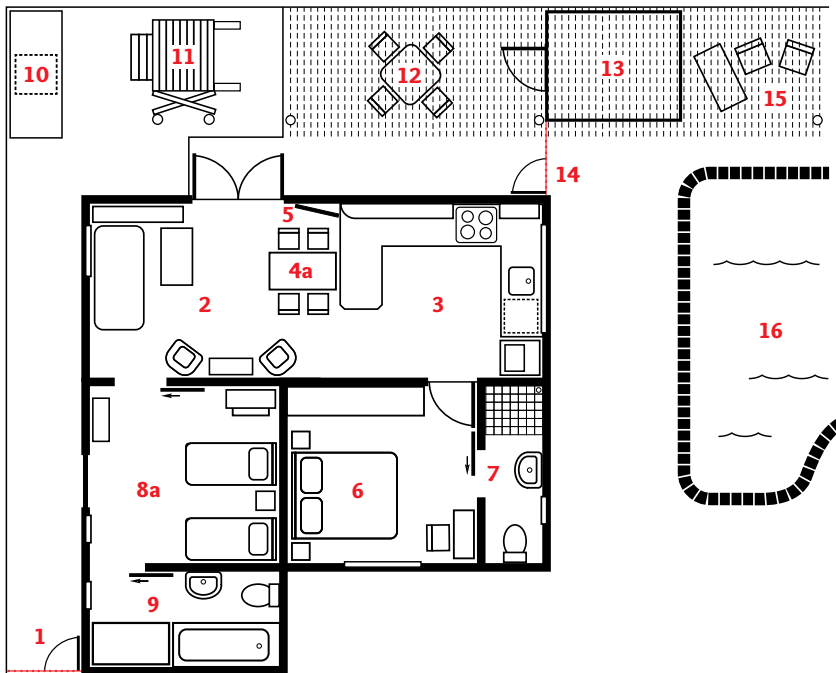


EXTENDED STAYS

* Minimum 2 weeks stay

Ideal for families re-locating to or from PE.

Negotiable* Per Night



THE CORAL TREE COTTAGE

SLEEPS 1 TO 4 PEOPLE

1. Private entrance gate
2. Living area
3. Kitchen (fully equipped)
- 4a. Dining nook (4 seater)
5. TV (wall mounted)
6. Double bed (Parents' room)
7. En-suite bathroom (with shower)
- 8a. Single beds x 2 (Children's room)
9. En-suite bathroom (with bath)
10. Braai area (built in)
11. Jungle gym
12. Patio (shaded)
13. Play house (shaded)
14. Pool area access gate
15. Pool furniture (shaded)
16. Pool

OR

SLEEPS 5 PEOPLE

- 4b. Dining nook (5 seater)
- 8b. Single beds x 3 (Children's room)

